



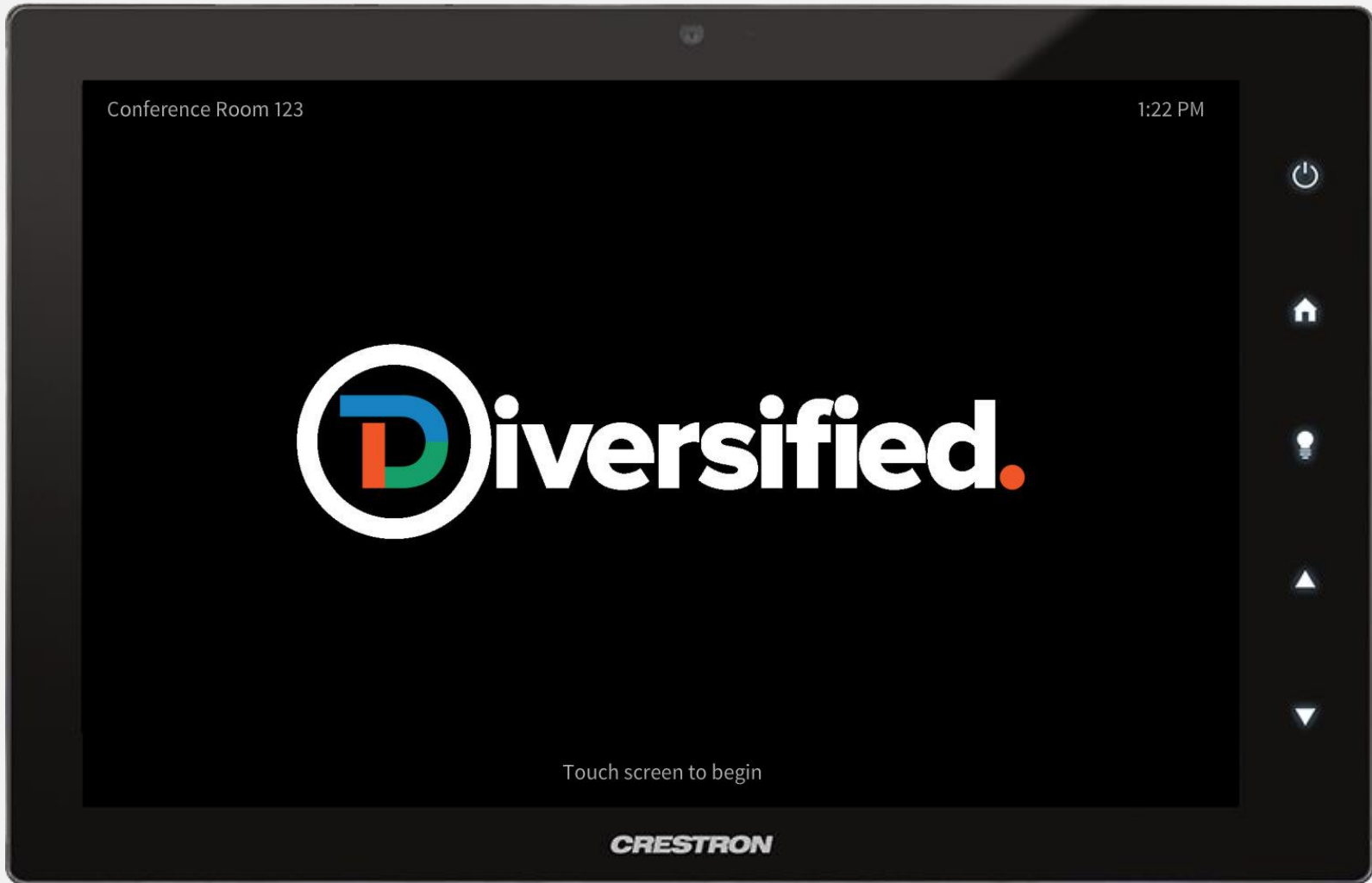
Standard AV Template

Dark Theme

TSW-1060



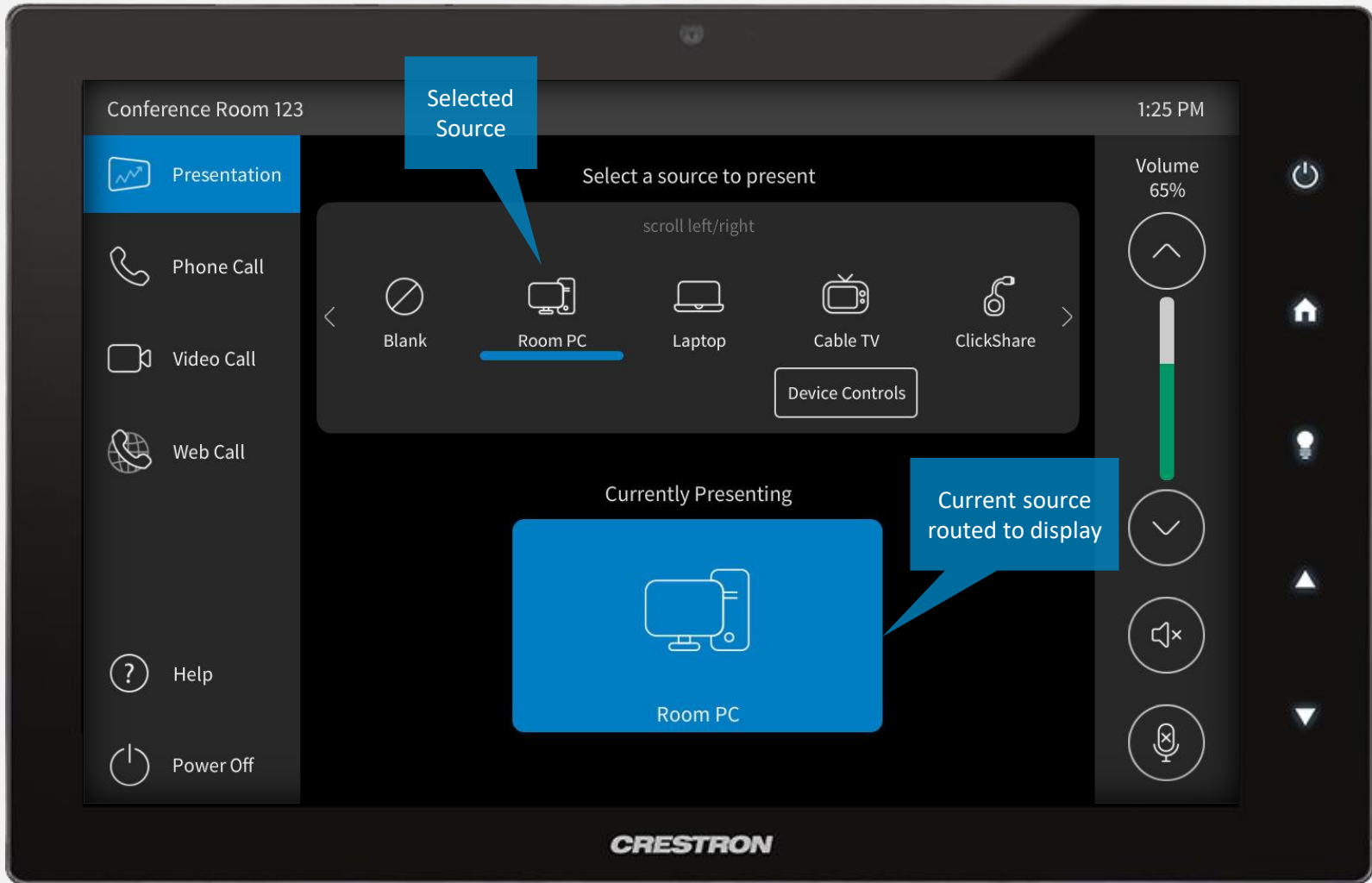
Presentation, Phone &  
Video Call AV System



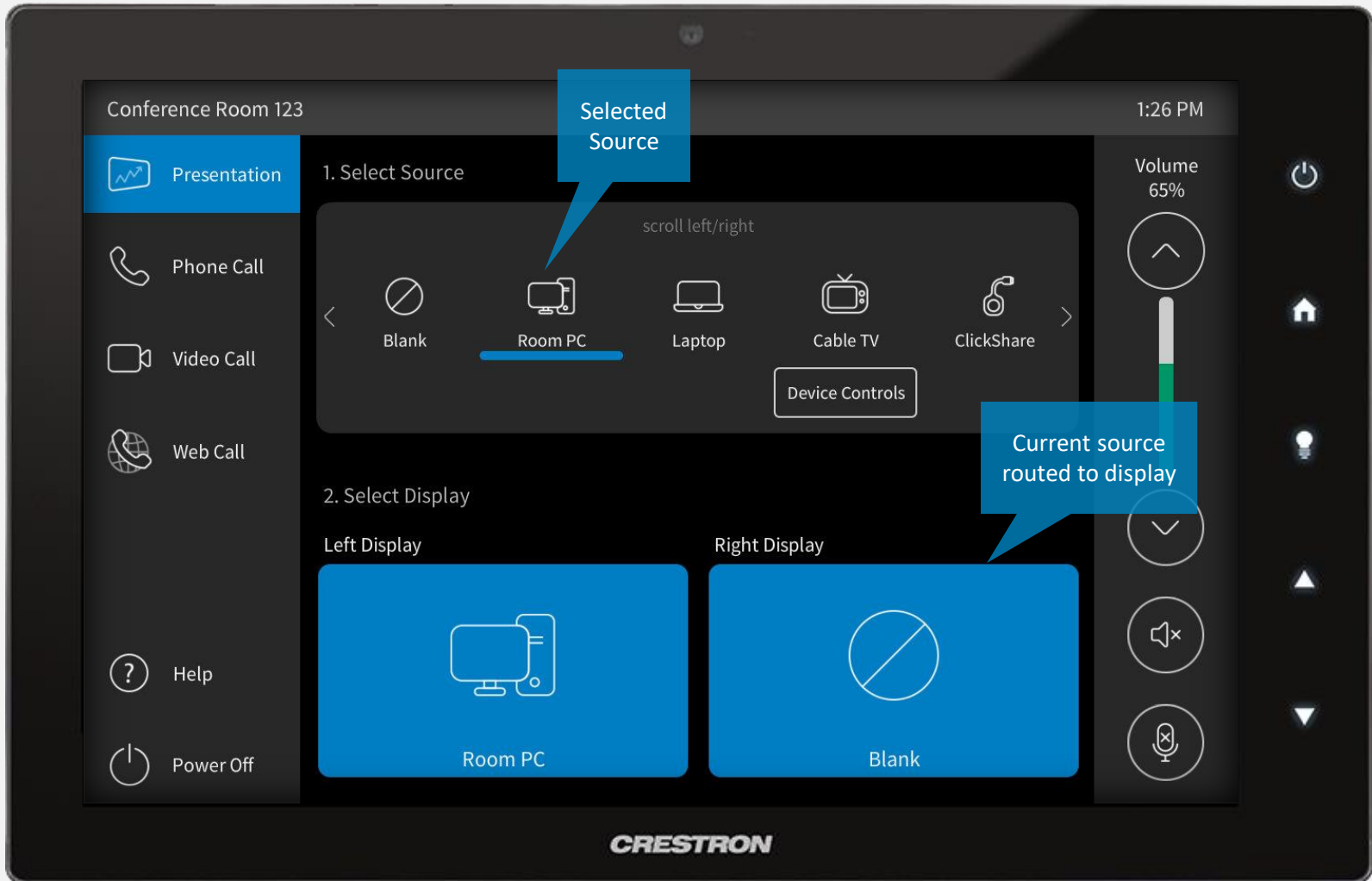
The Splash Screen is visible when the system first boots up or is currently inactive. Touch anywhere on the screen to wake up the system and proceed to controls.



Make a selection from the left menu to access relevant controls. Volume controls are located on the right side of the screen. Use the up/down buttons to adjust room audio. Press the speaker mute icon to mute room audio. Press the mic mute icon to mute all system mics. A muted state is indicated by red. Press again to unmute.



Select *Presentation* from the left menu. At the top of the screen select a source and it will be routed to the room display. Select *Blank* to clear the route to the display. Press *Device Controls* under a source to access additional source controls.



Select *Presentation* from the left menu. At the top of the screen select a source, and then select display(s) in the bottom portion of the screen to route. Select *Blank* and then a destination to clear a route. Press *Device Controls* under a source to access additional source controls.

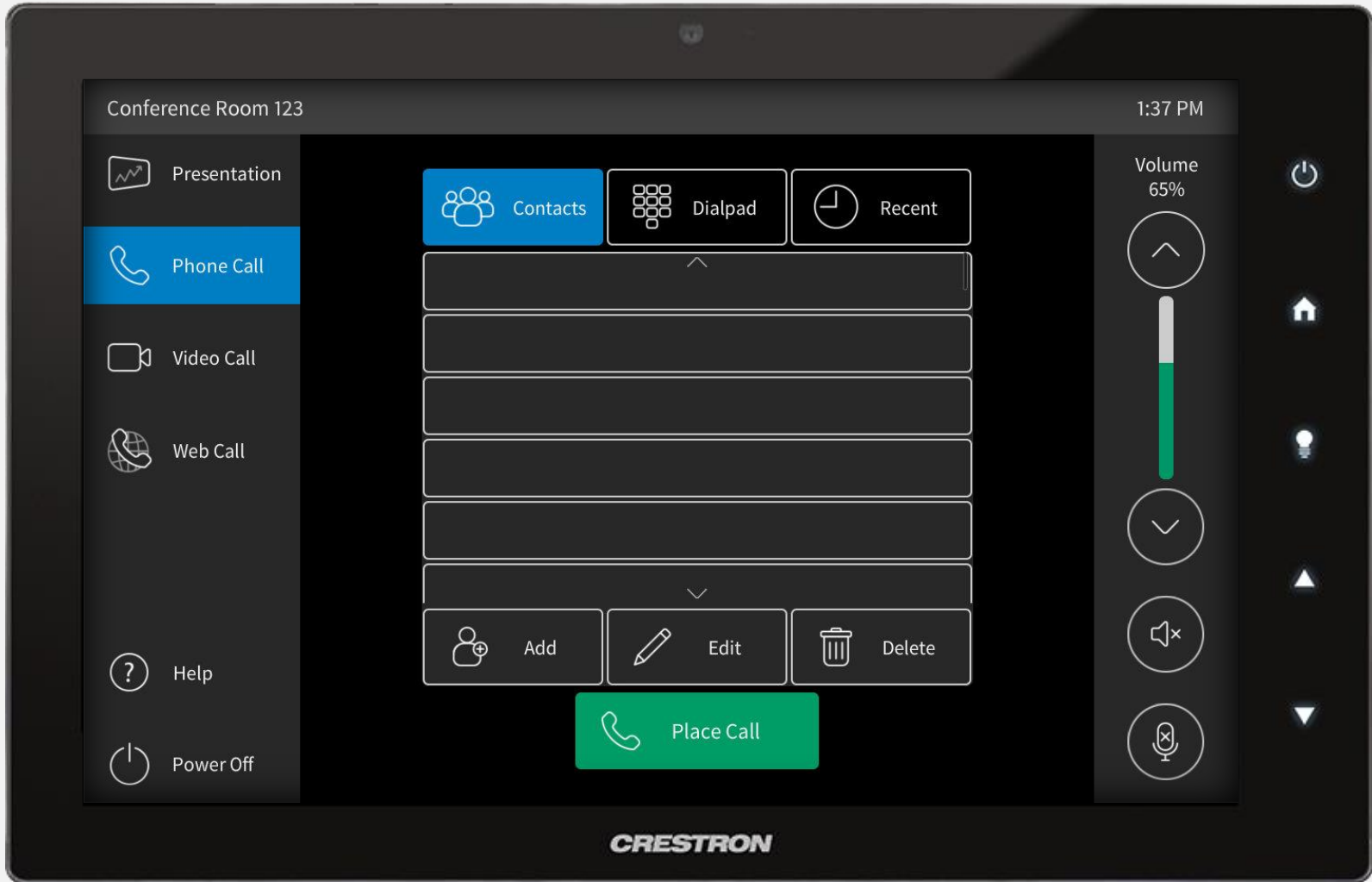


Select *Device Controls* under the Cable TV source to access controls. Use the keypad to enter a channel number, browse channels up/down, or select a channel preset to recall. To edit a channel preset, press and hold a preset button. Press the close icon in the upper right corner to exit.



After pressing and holding a channel preset, the *Channel Preset* popup will appear. Tap the *Name* and *Number* text fields to access a keyboard. Enter desired information, press *OK* and to exit keyboard and then press *Save* to store channel preset.

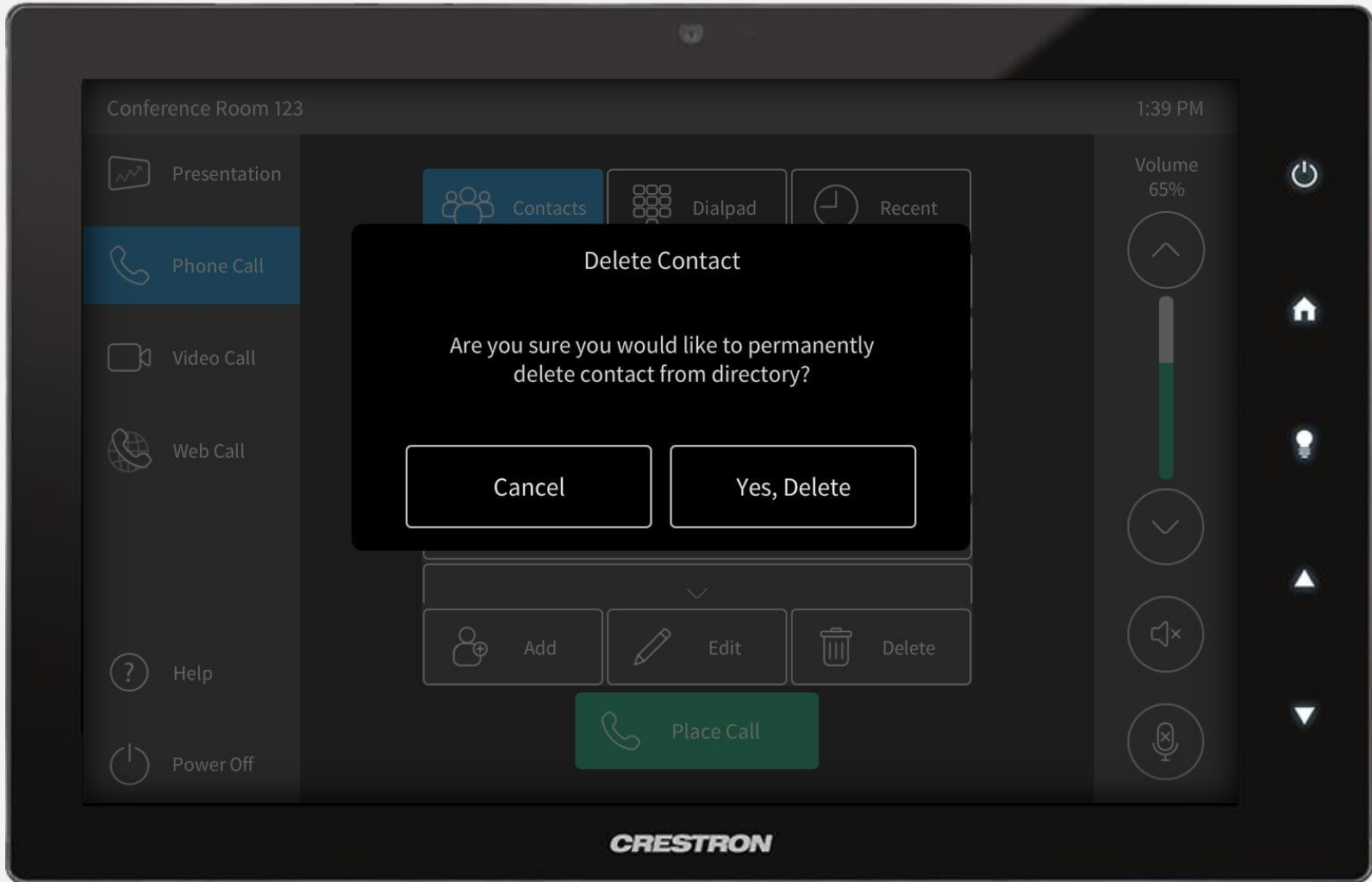




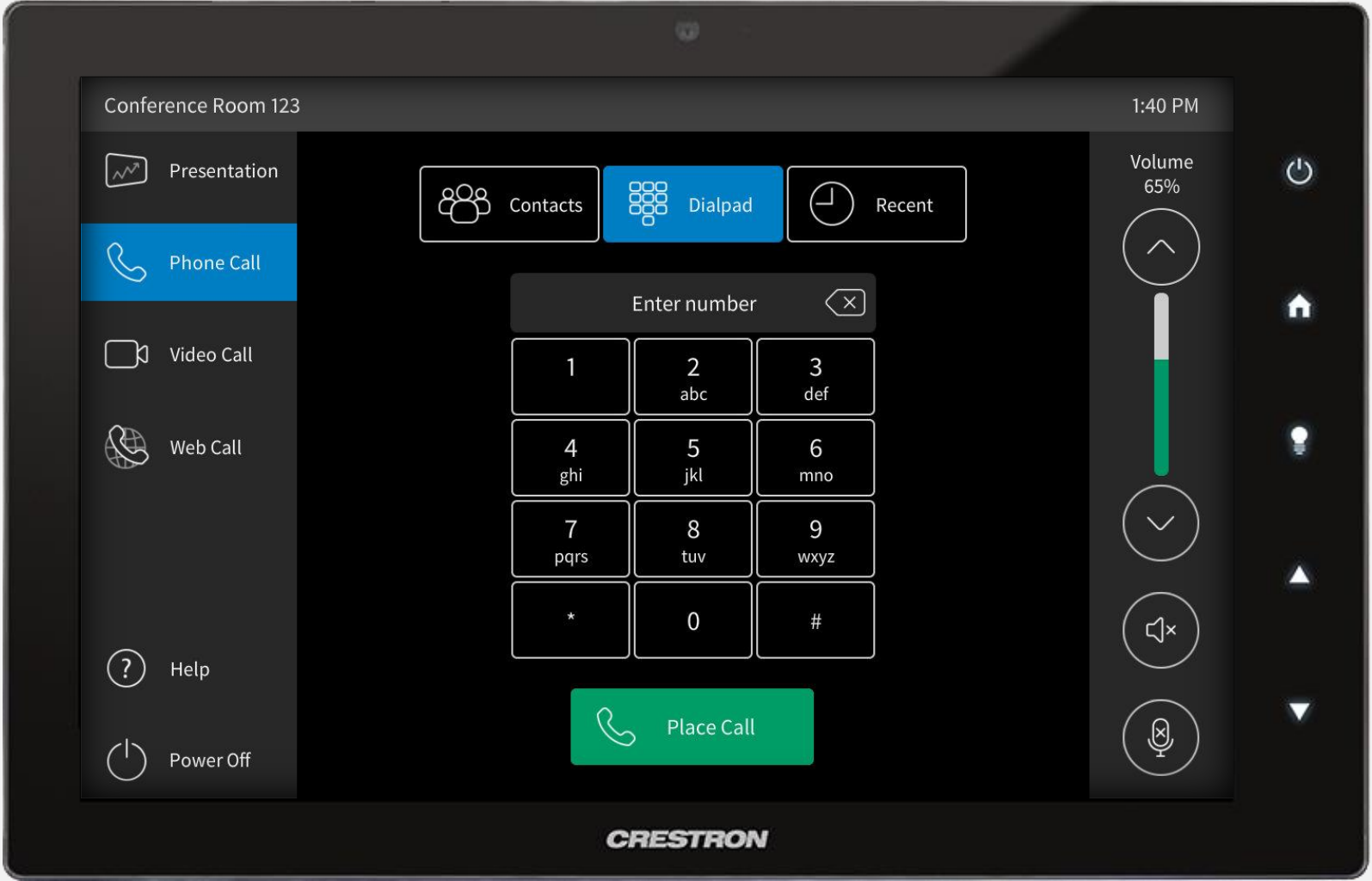
Select *Phone Call* from the left menu. At the top of the screen, select *Contacts*. Scroll through a list of saved contacts and make a selection, then press *Place Call* to dial. User may also *Add*, *Edit*, or *Delete* a contact.



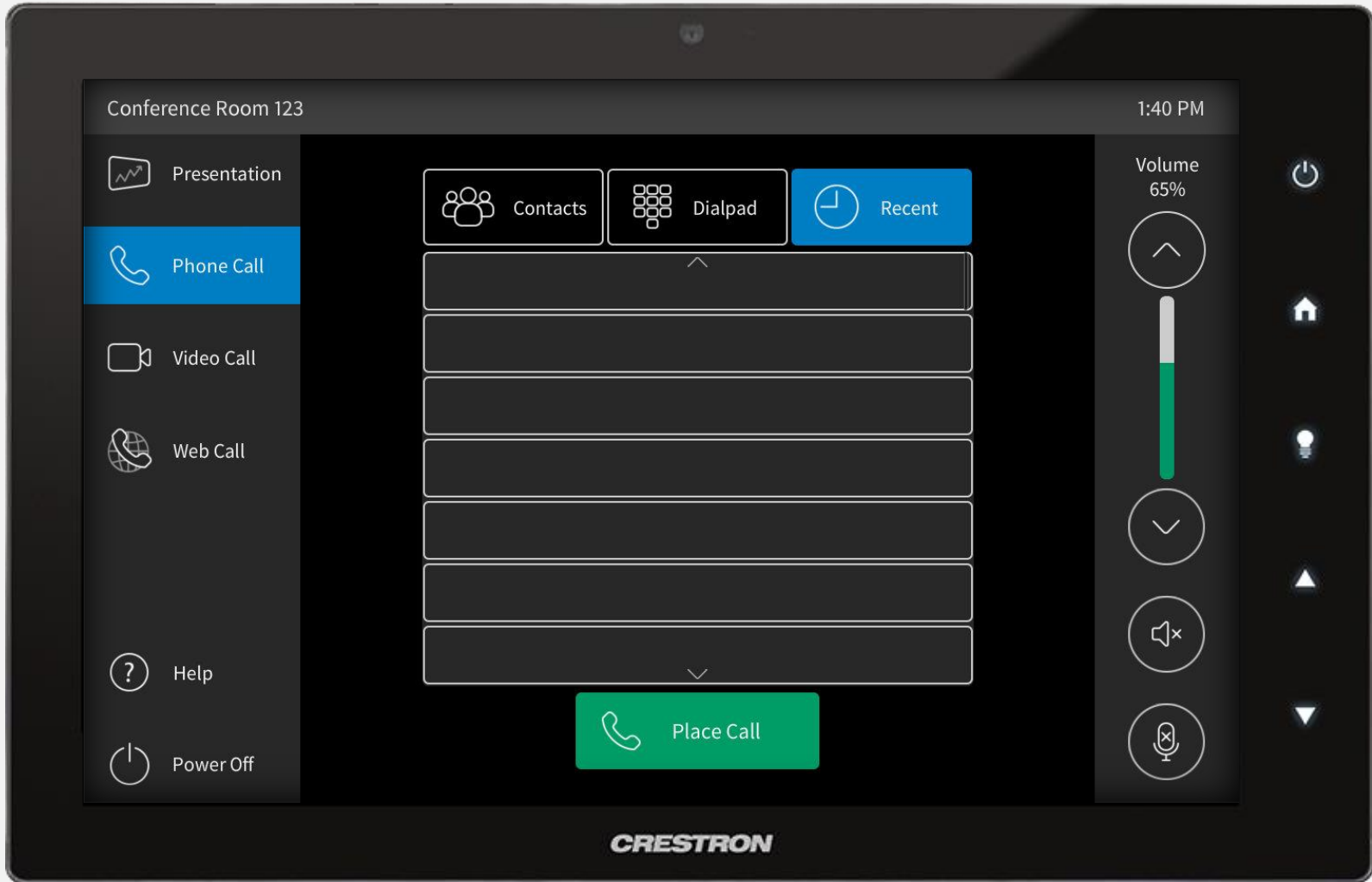
Press *Add* or *Edit* at the bottom of the Contacts page and a popup will appear with text fields for *Name* and *Number*. Tap a text field and a keyboard will appear. Enter the desired information, press *OK* to close the keyboard and then press *Save* to store the new contact information.



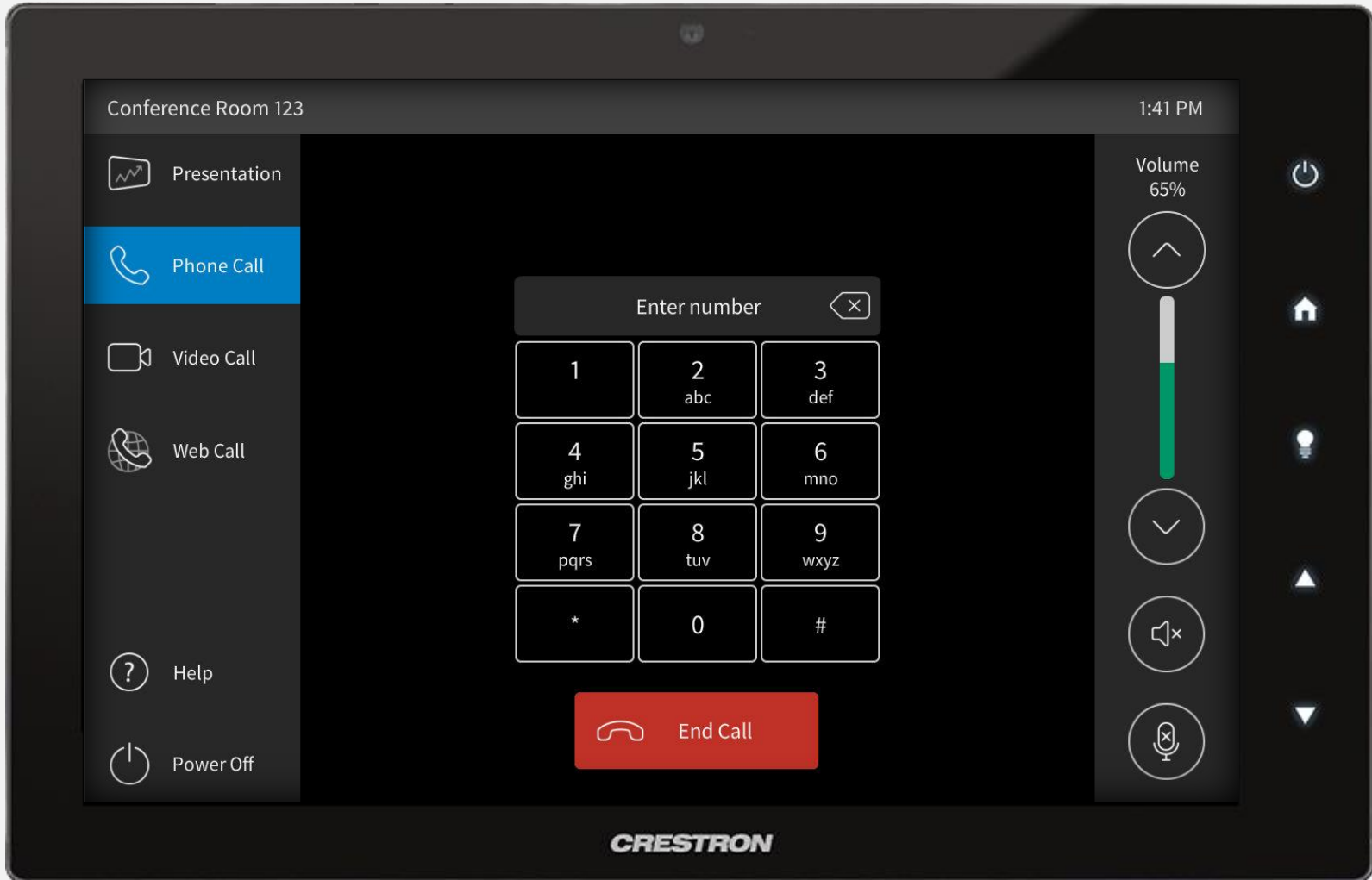
Select a contact then press *Delete* at the bottom of the Contacts screen. A confirmation popup will appear. Press *Yes, Delete* to remove entry from saved contacts.



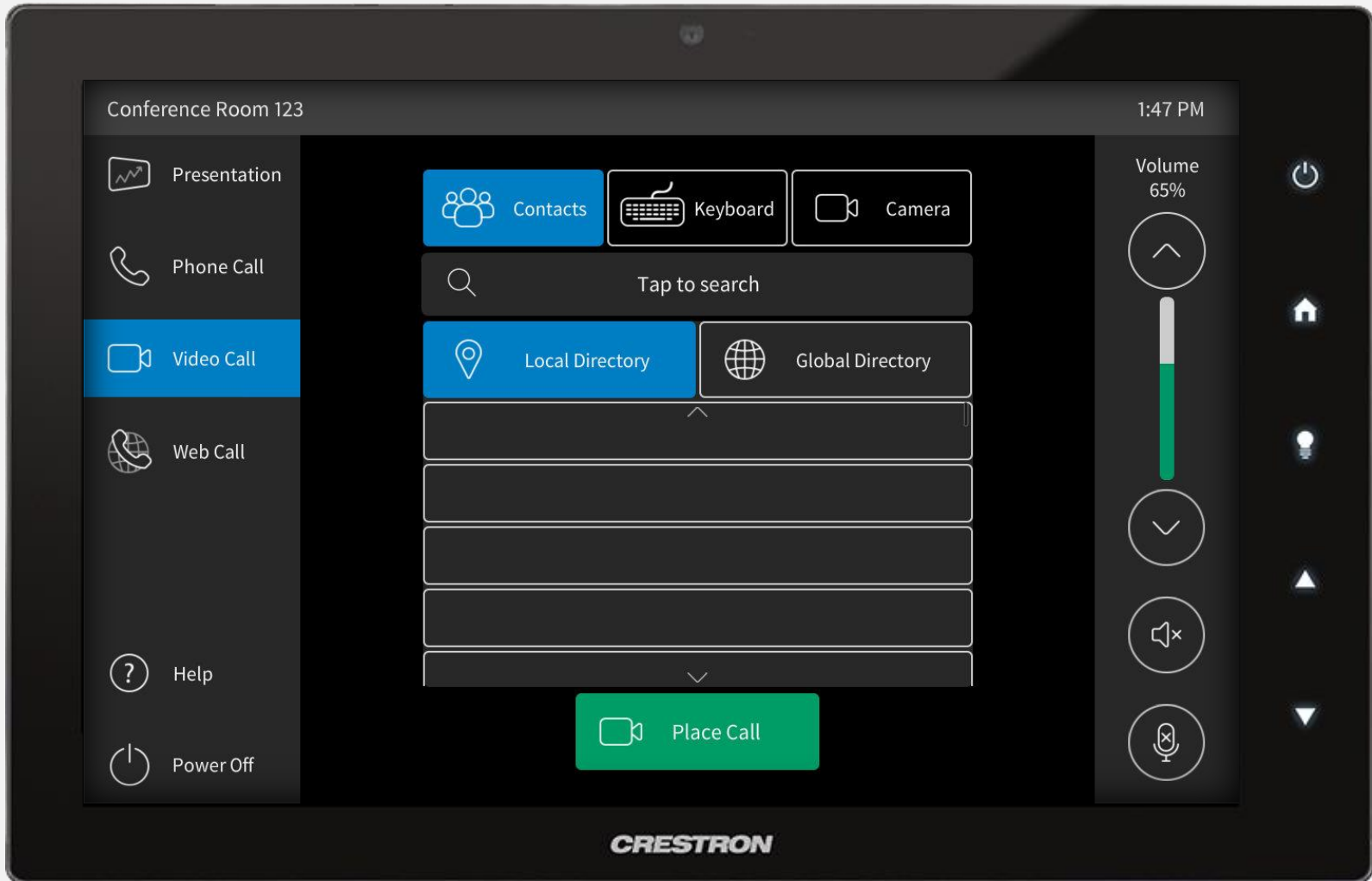
Select *Phone Call* from the left menu. At the top of the screen, select *Dialpad*. Use the dialpad to enter phone number and then press *Place Call* to dial.



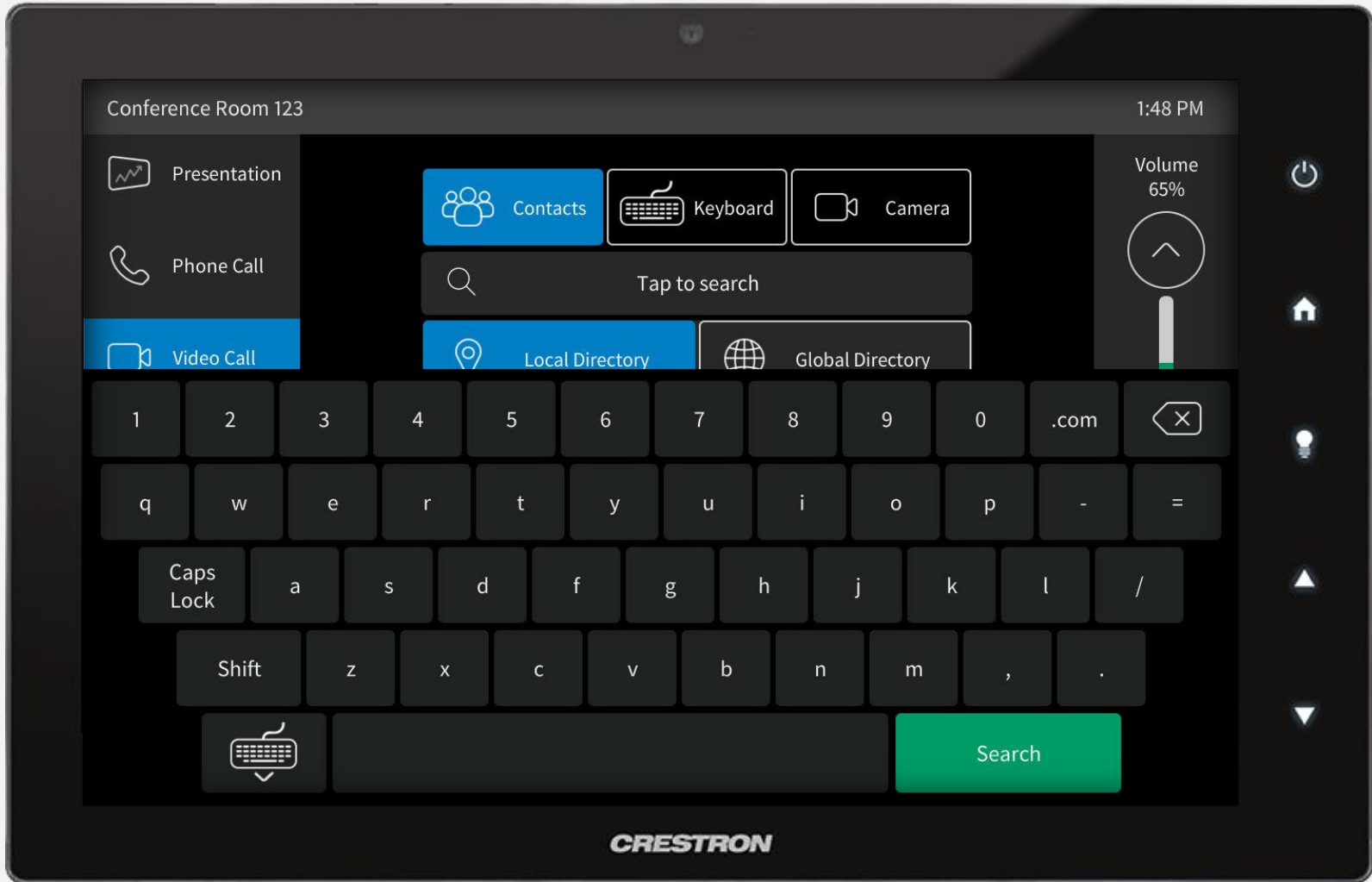
Select *Phone Call* from the left menu. At the top of the screen, select *Recent*. Scroll through a list of recent calls, make a selection and then press *Place Call* to dial.



During an active phone call, use the keypad to enter DTMF tones. Press the red *End Call* button to hang up.

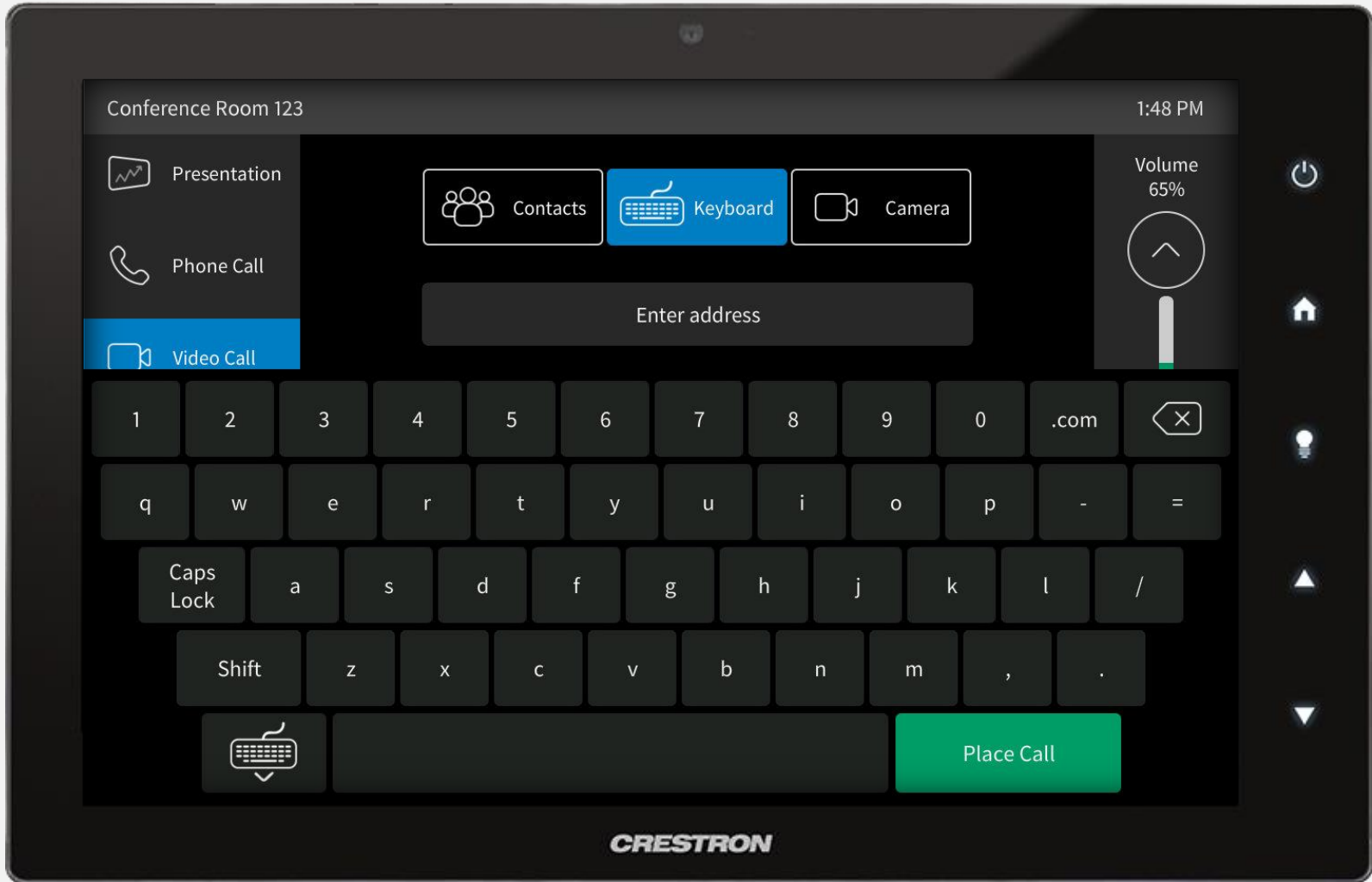


Select *Video Call* from the left menu. At the top of the screen, select *Contacts*. Choose to browse either *Local* or *Global Directory*. With a contact selected, press *Place Call* to be connected. Tap the search bar to search for a saved contact.

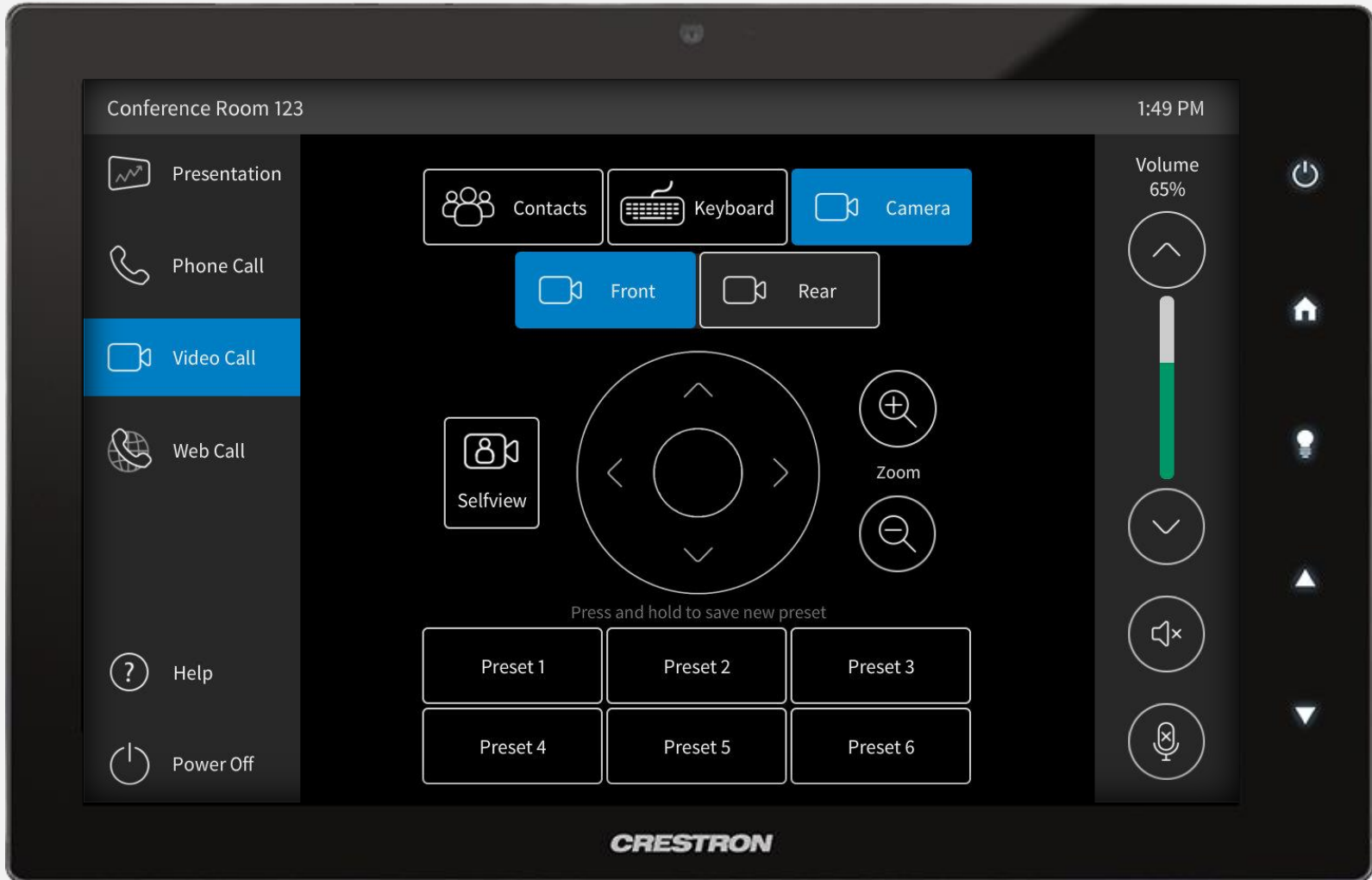


Tap the search bar and use the keyboard to enter contact name. Tap *Search* to view search results.

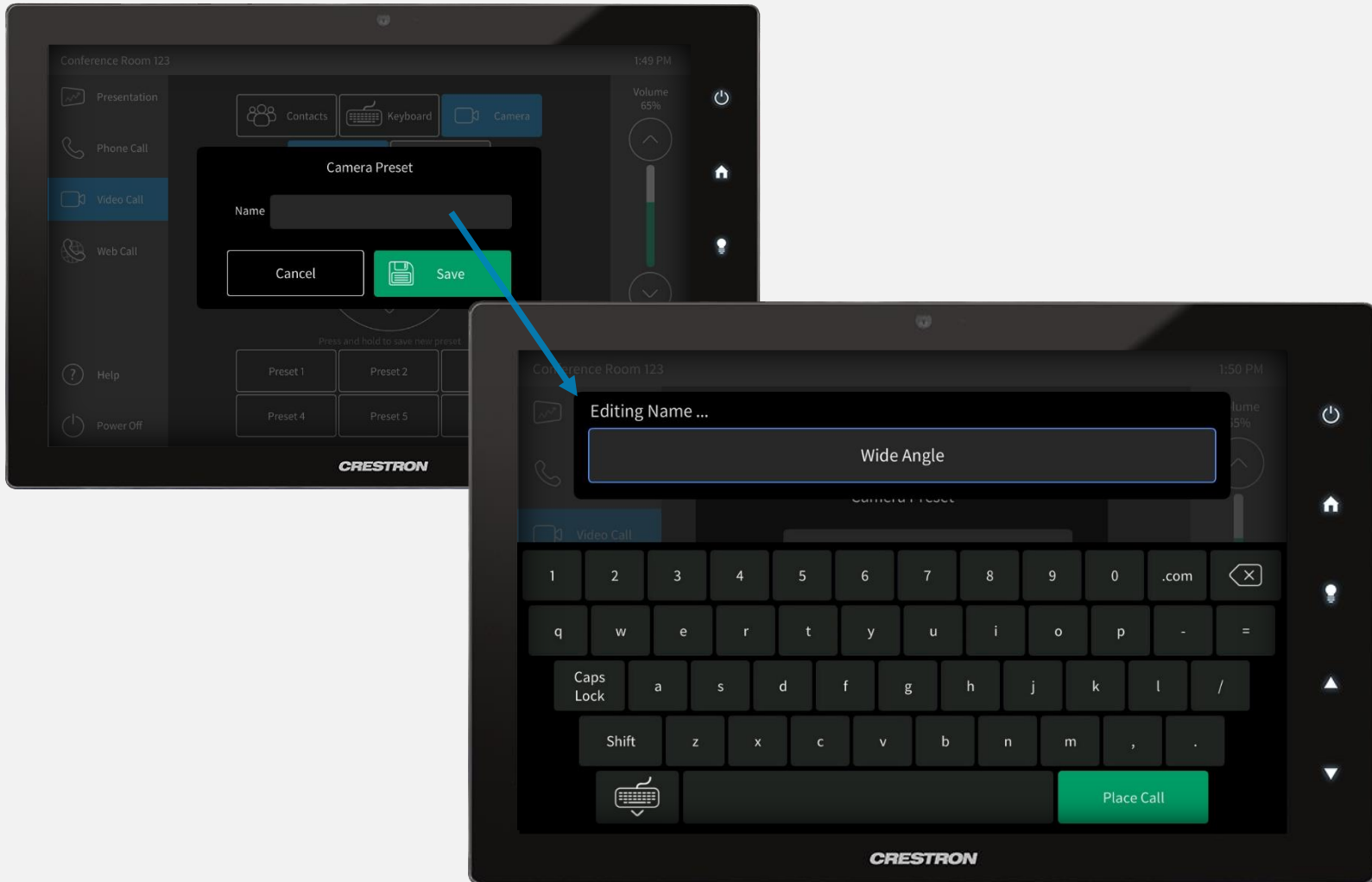




Select *Video Call* from the left menu. At the top of the screen, select *Keyboard*. Use the keyboard to manually enter an address and then press *Place Call* to be connected.



Select *Video Call* from the left menu. At the top of the screen, select *Camera*, then below select either the *Presenter* or *Audience* Camera to control. Use the up/down/left/right and Zoom in/out buttons to adjust camera position, or select a preset at the bottom of the screen to recall. To save a new preset, press and hold a preset button.



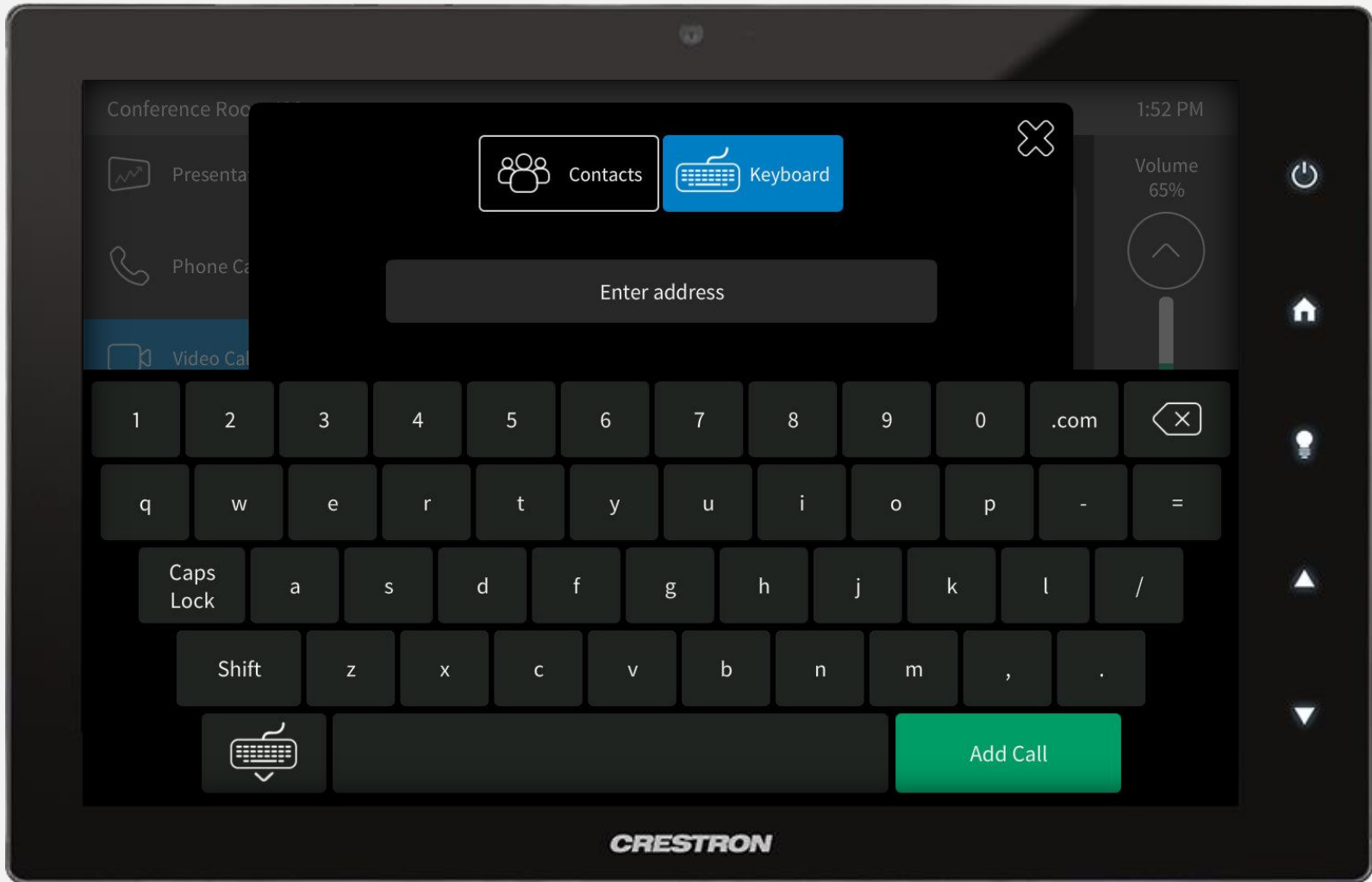
With camera in desired position, press and hold a preset button. A popup will appear. Tap the *Name* text field then use the keyboard to enter desired preset name. Press *OK* to close keyboard, then press *Save* to store new preset.



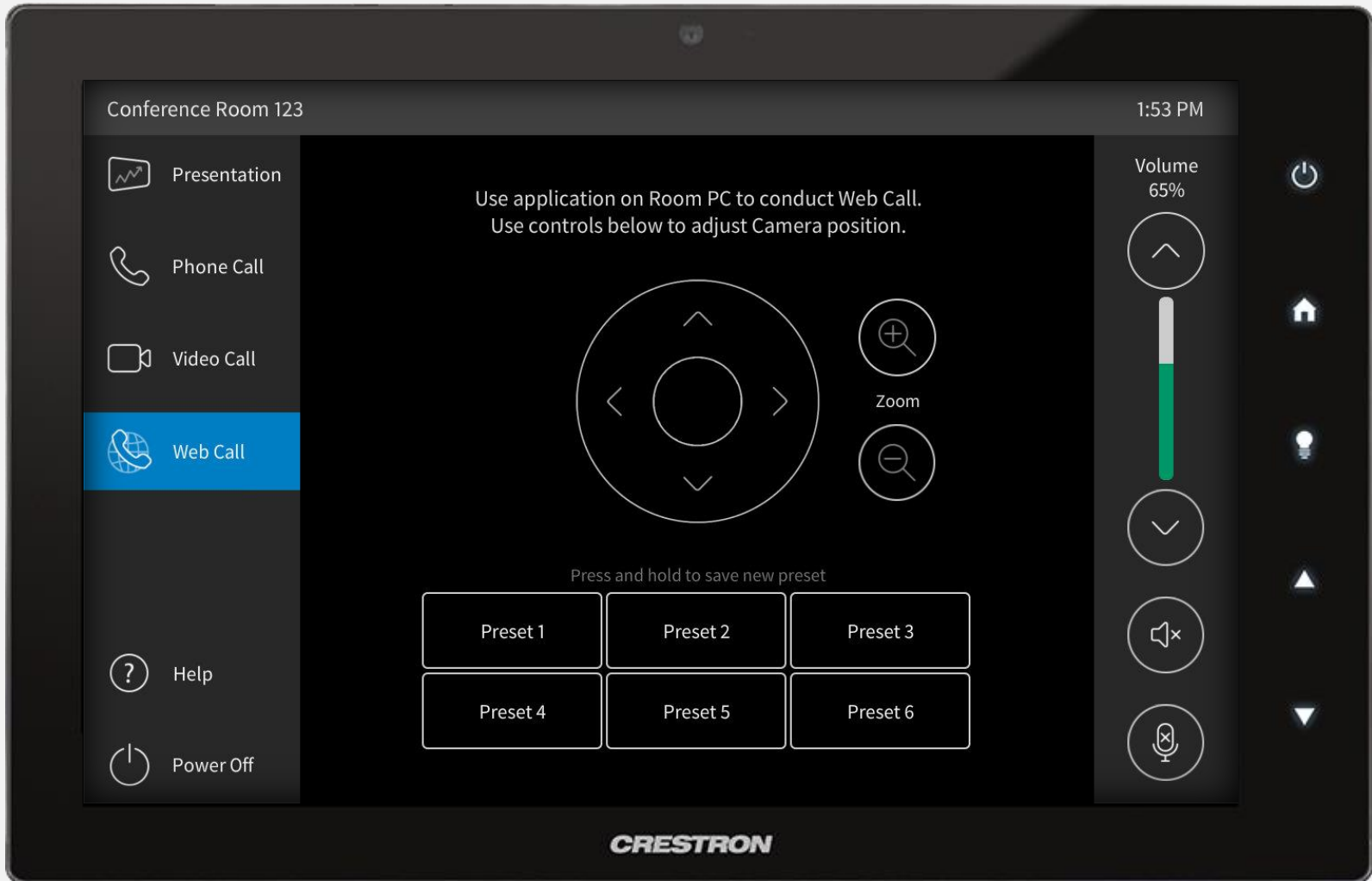
During an active call, select a source at the top of the screen to share with the Far End or press *Stop Sharing* to cease sharing content. Use the keypad to enter DTMF tones and use Camera Controls to position cameras. Press *Add Call* to add call participants. Press the red *End* button to hang up.



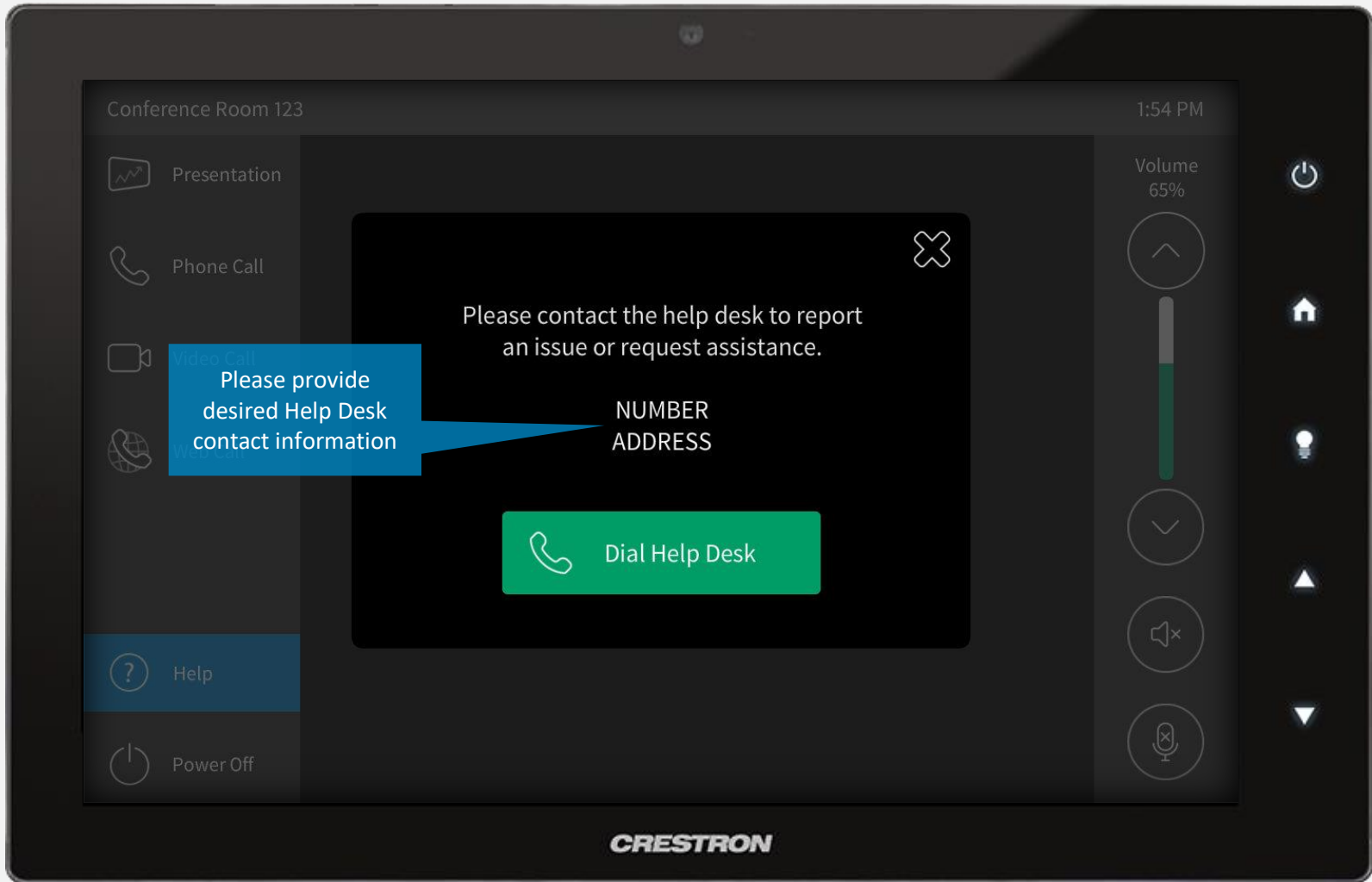
During an active call, press *Add Call* to add participants. The above popup will appear. Select *Contacts* at the top to select or search for a saved contact. With a contact selected, press *Add Call* to dial.



Select *Keyboard* at the top of the screen and use the keyboard to manually enter an address. Press *Add Call* to dial.

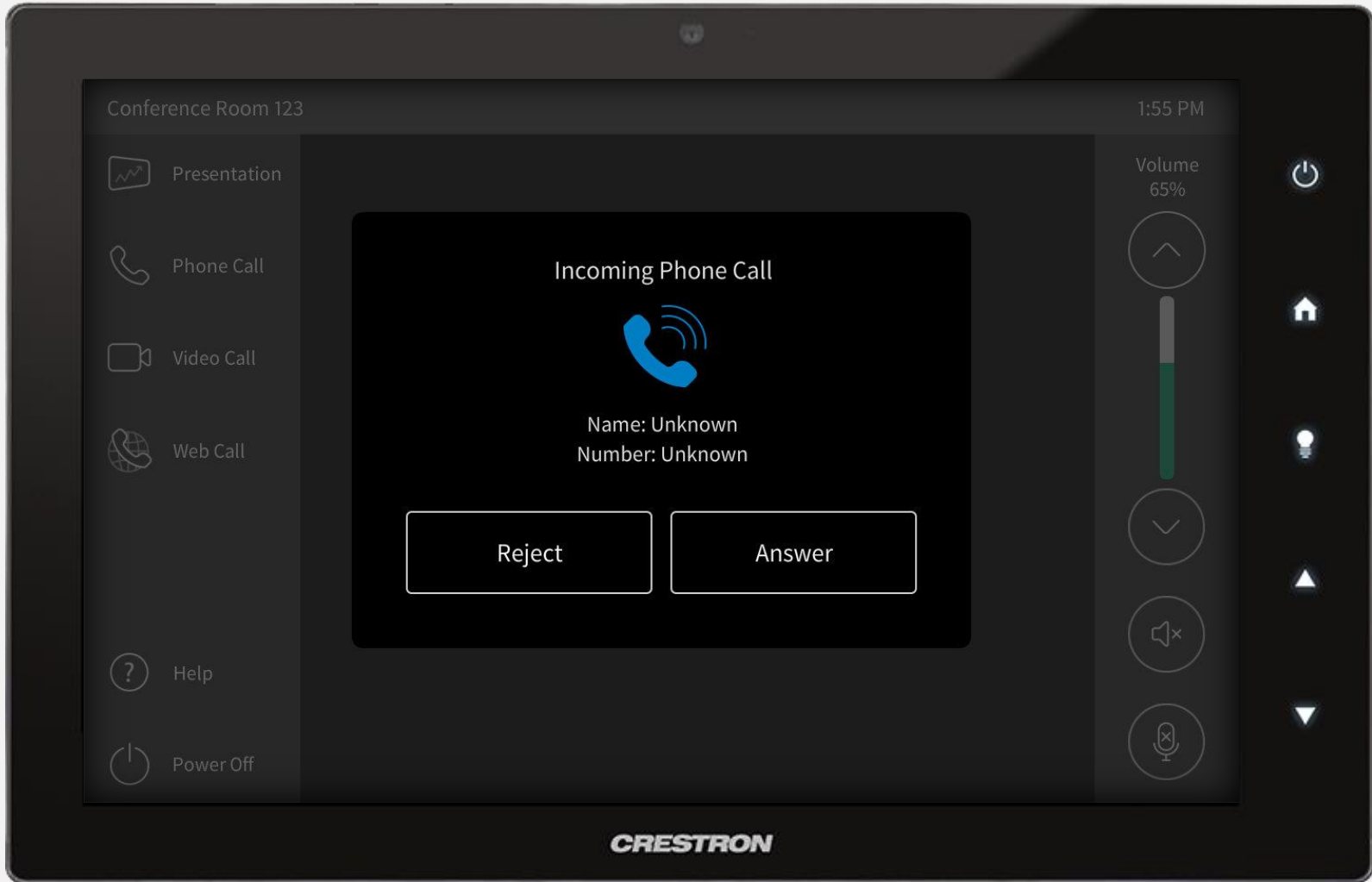


Select *Web Call* from the left menu. Use application on Room PC to start and conduct call. If the system allows for it, use the controls on touch panel to adjust camera position.

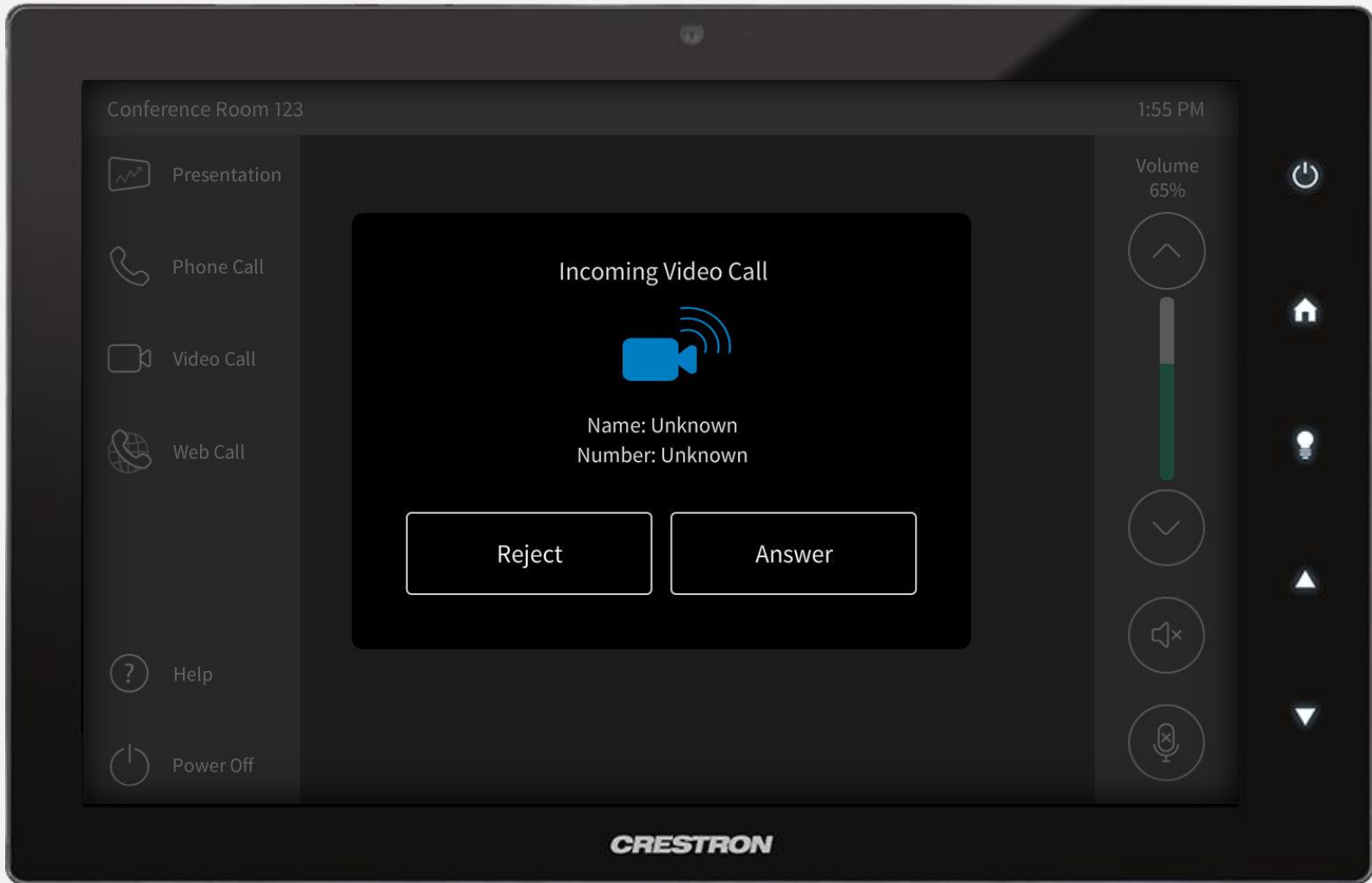


Select *Help* from the left menu. Use the provided contact information to get in touch with the help desk to report an issue or request assistance. User may also simply press *Dial Help Desk* to be automatically connected.

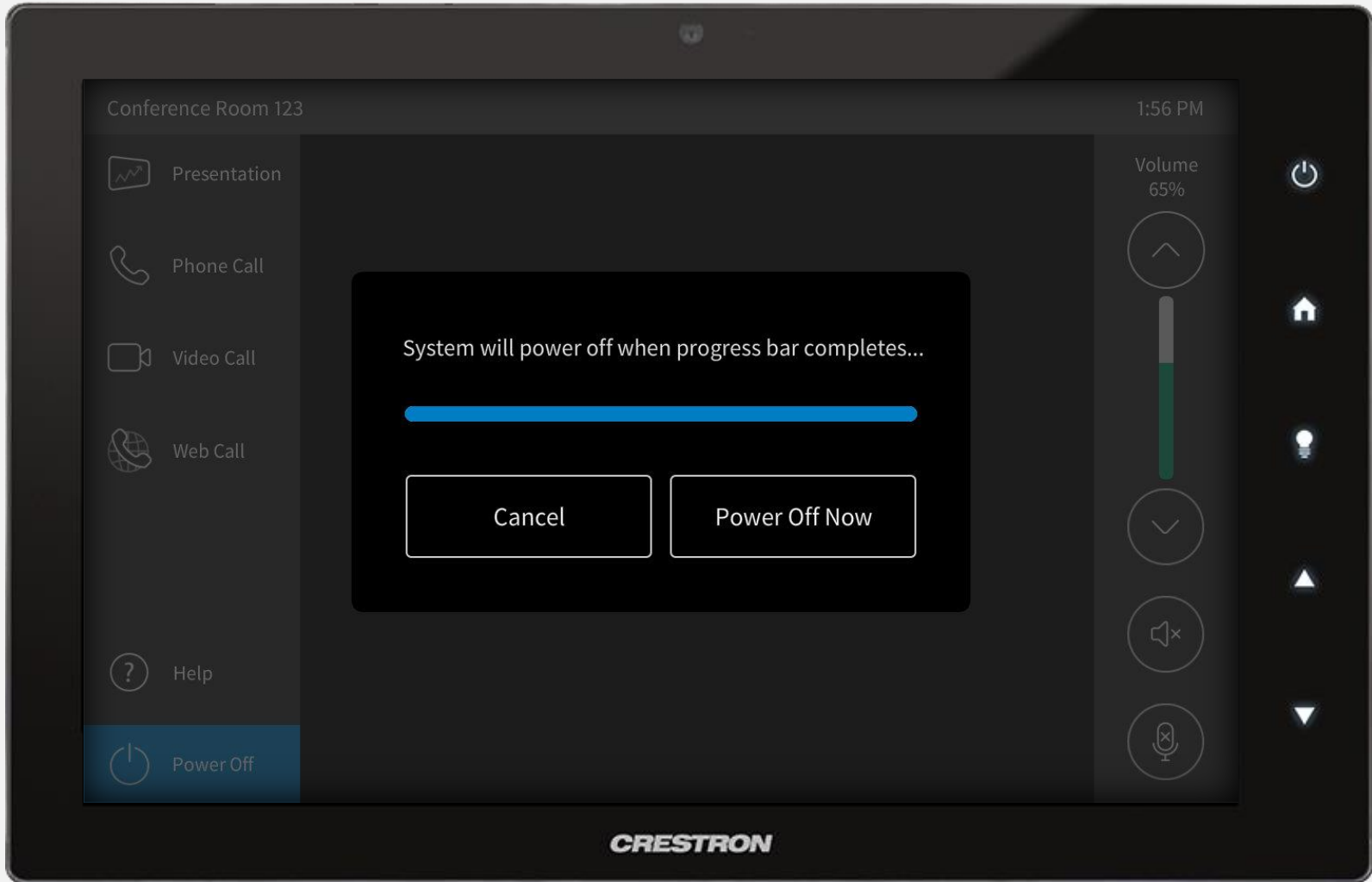




When an incoming Phone Call is detected, the above popup will appear. User must choose to either *Reject* or *Answer* call.

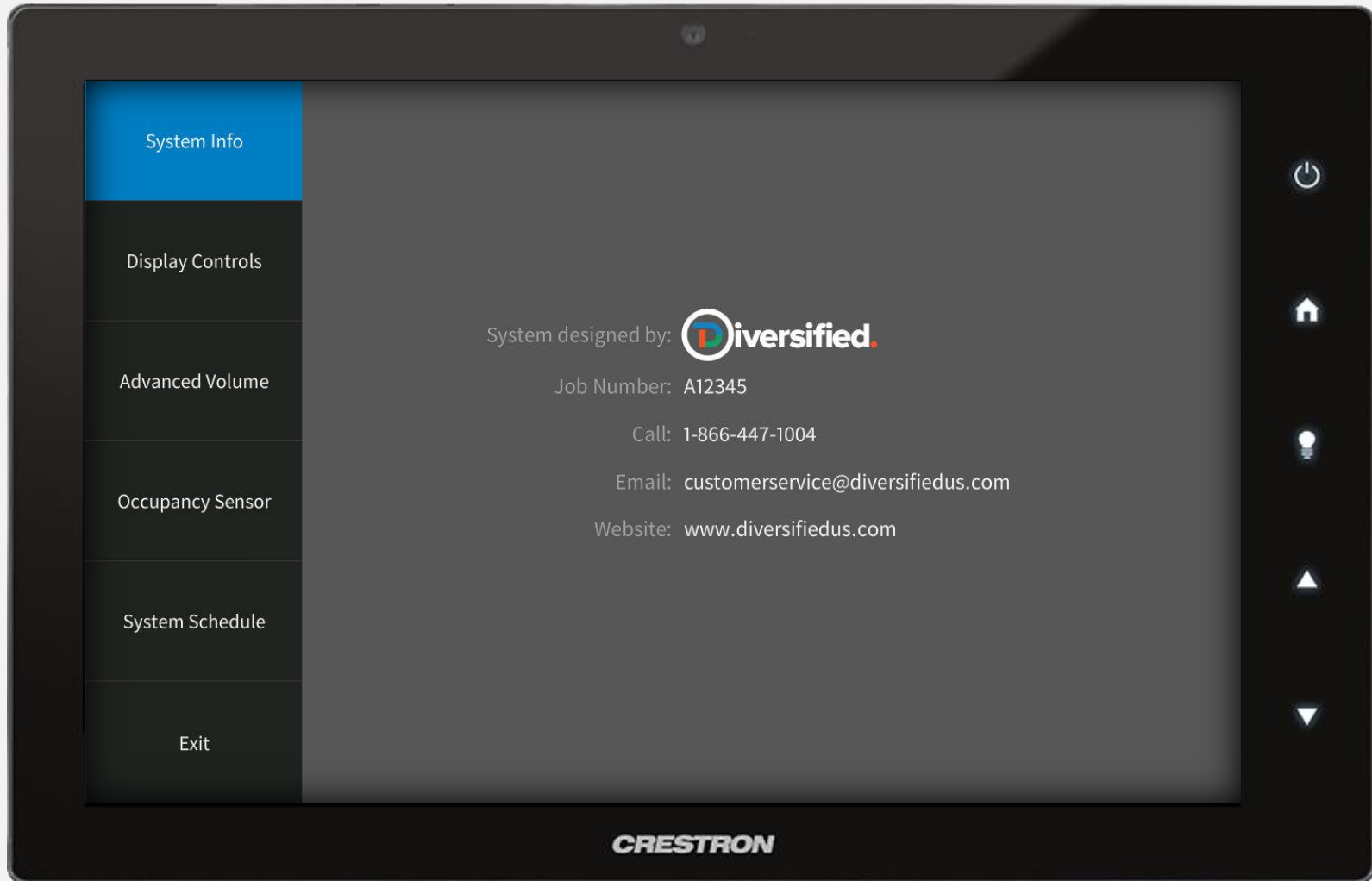


When an incoming Video Call is detected, the above popup will appear. User must choose to either *Reject* or *Answer* call.

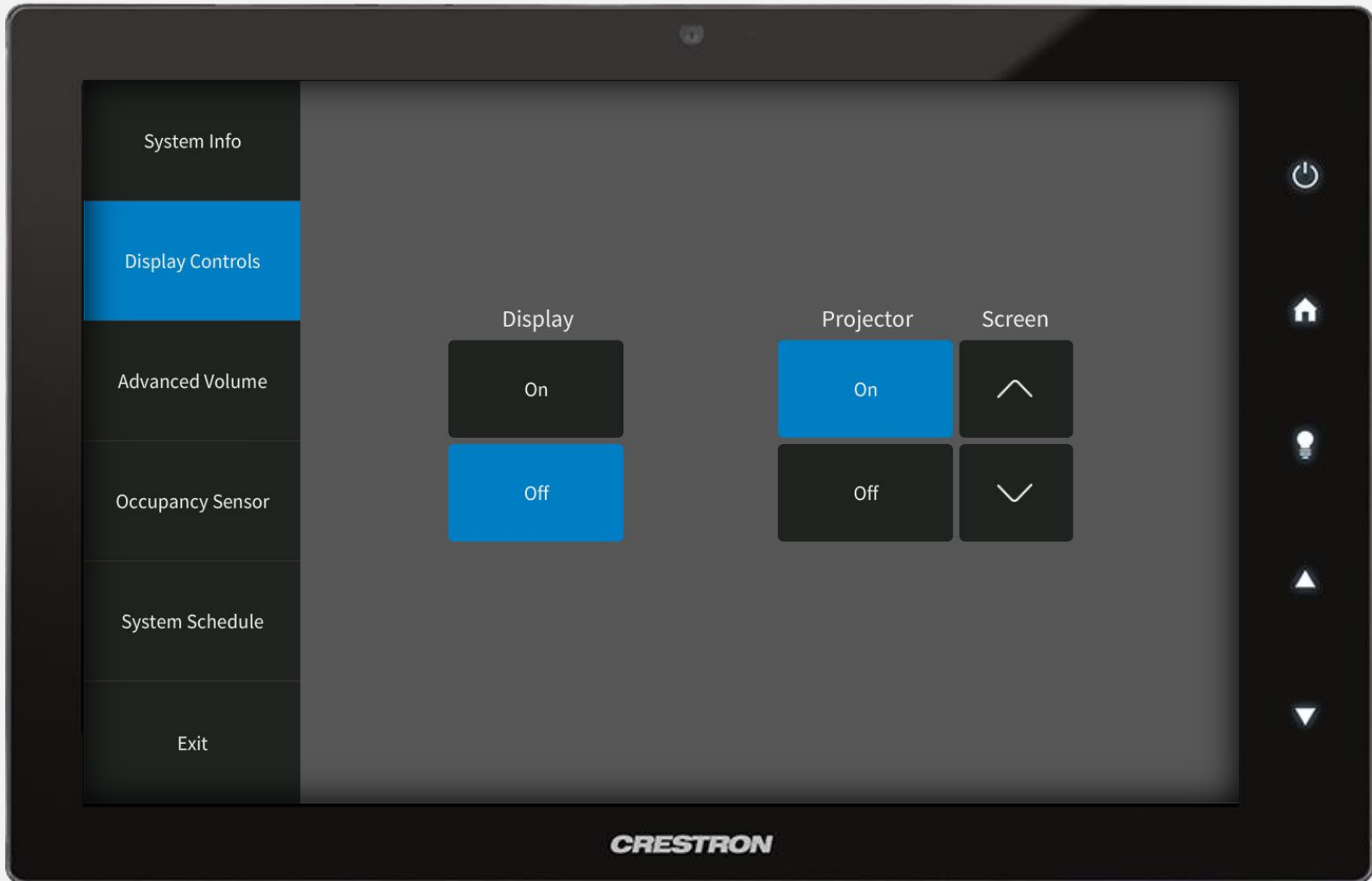


Select *Power Off* from the left menu. The above confirmation popup will appear on screen. User can choose to *Cancel* or *Power Off Now*. If a selection is not made before the progress bar completes, the system will shutdown.

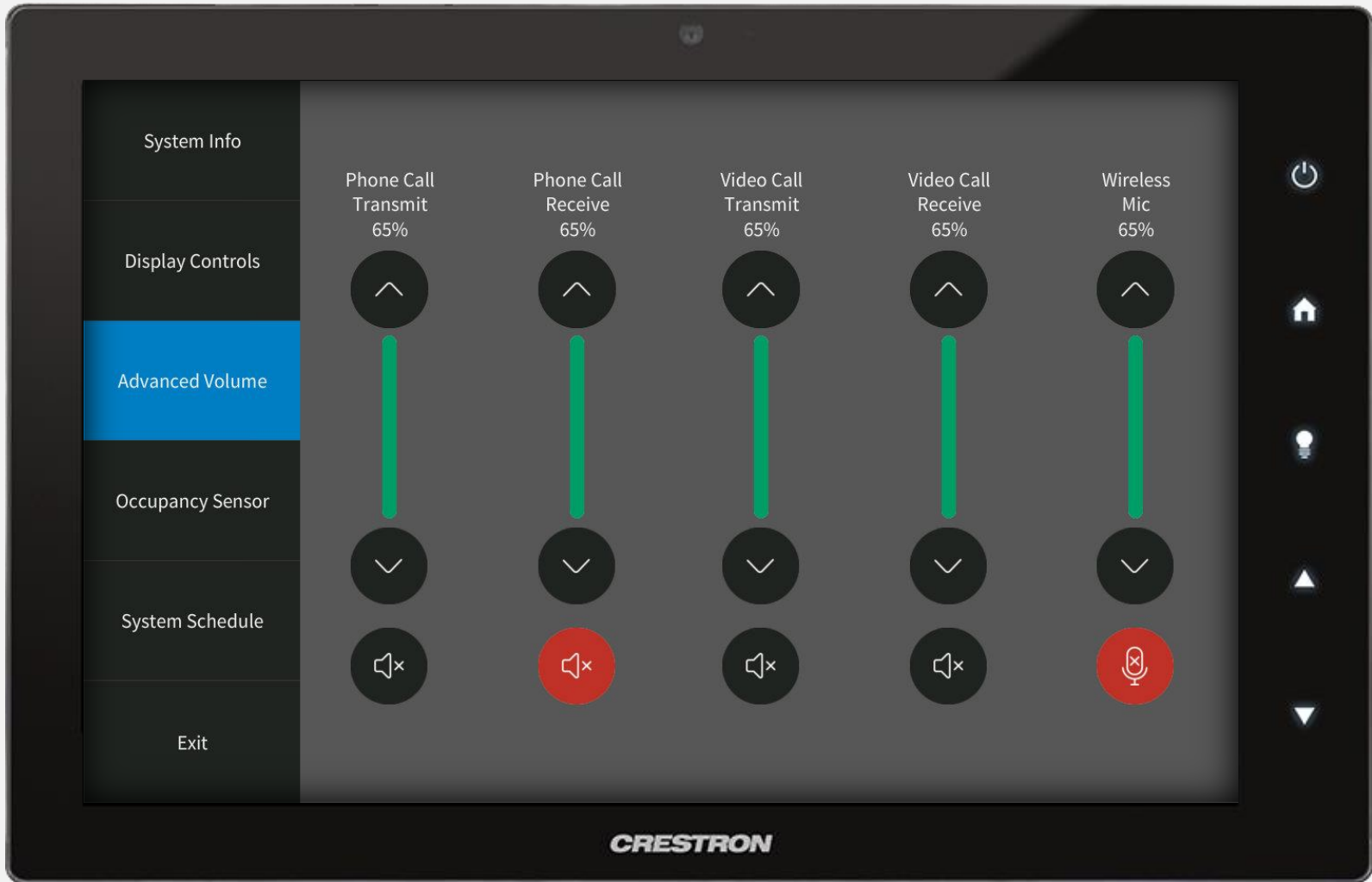
# Hidden Technician Controls



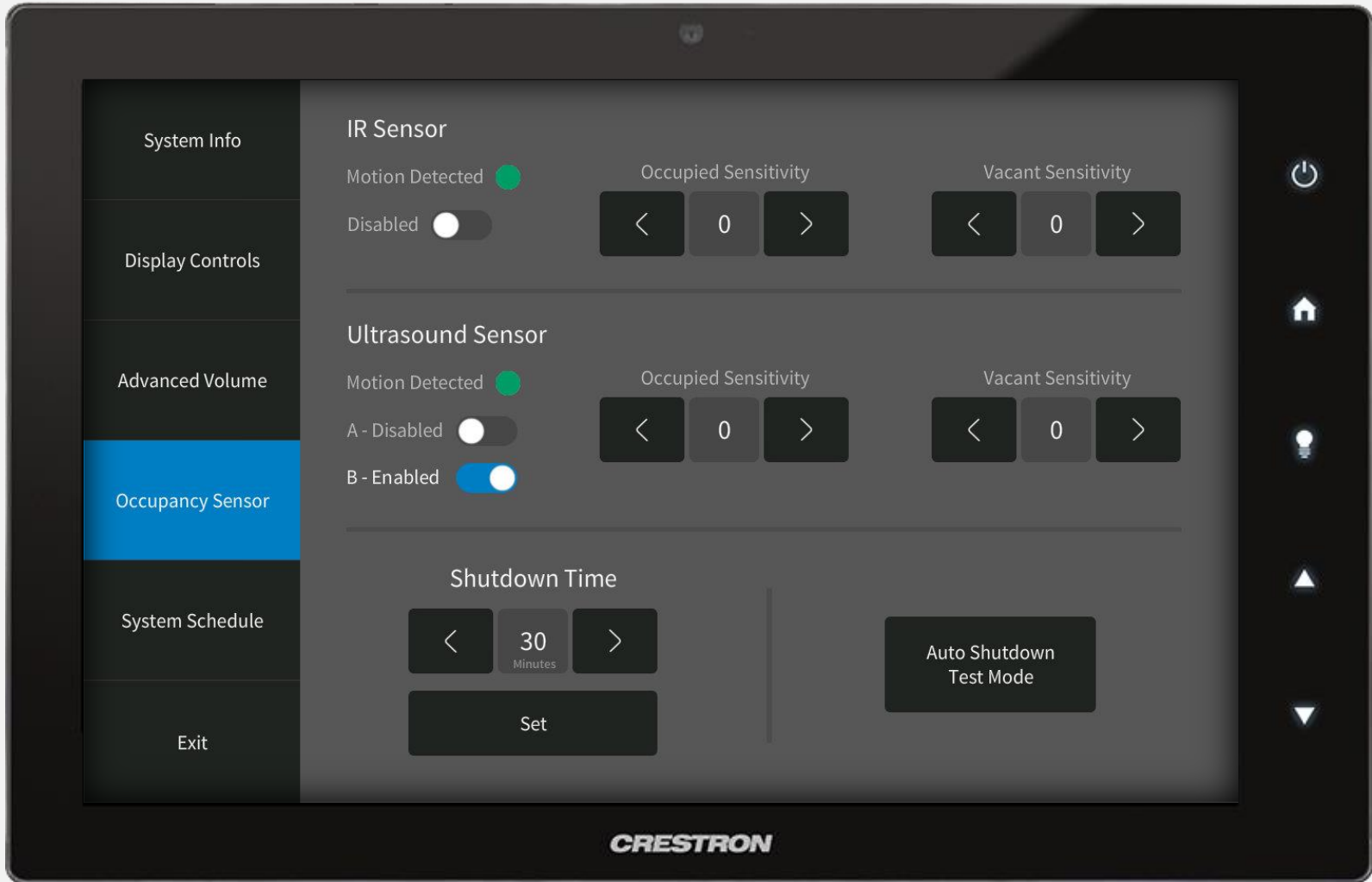
Press and hold the room name in the upper left corner of the Main Page to access the Technician Section. Select *System Info* from the left menu. This screen provides Project and Diversified contact information. Press *Exit* to return to the Main Page.



Select *Display Controls* from the left menu. Use the provided controls to turn displays and projectors on/off and raise/lower projection screens.

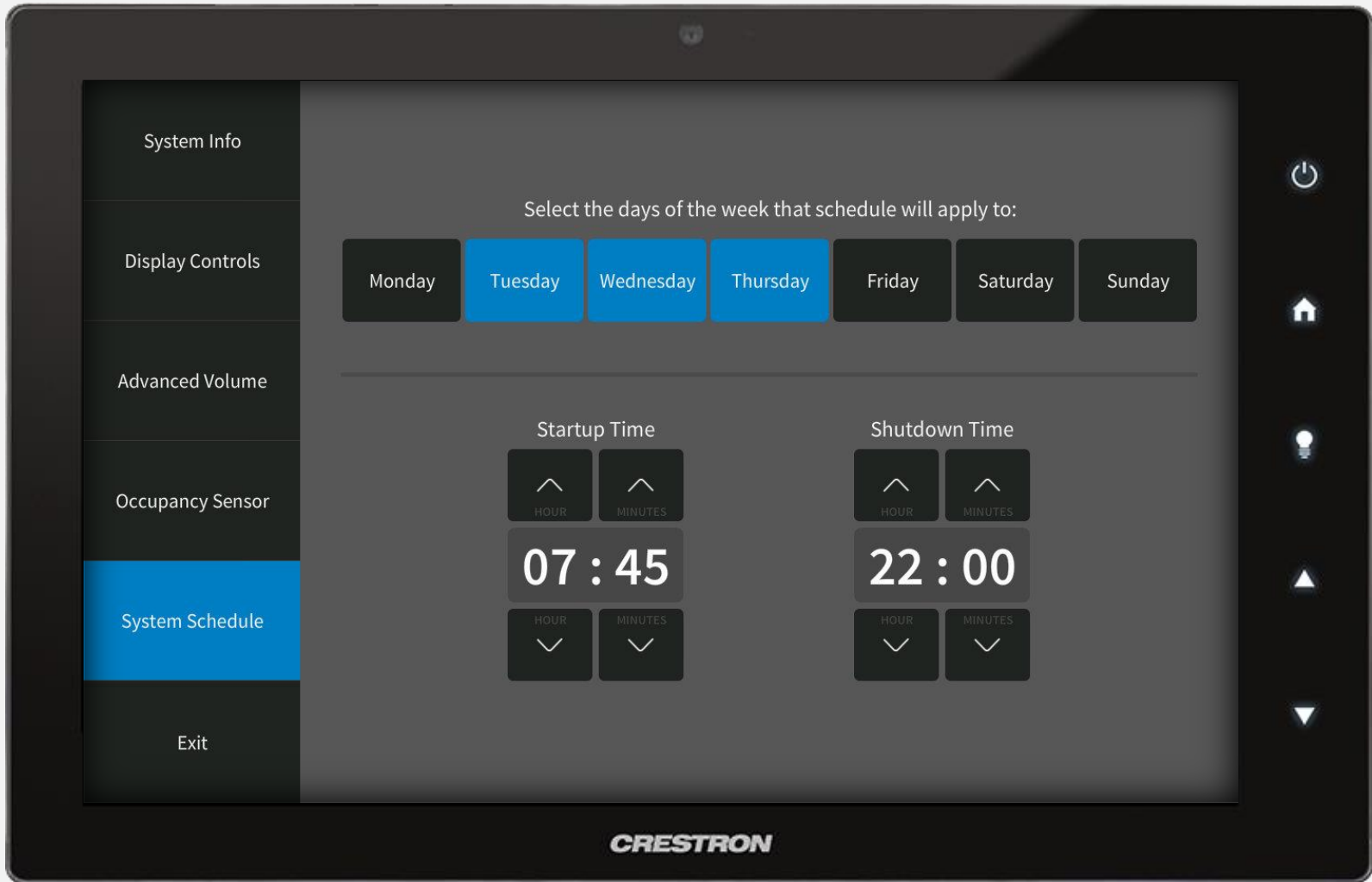


Select *Advanced Volume* from the left menu. Use the provided controls to raise/lower or mute various system audio levels.



Select *Occupancy Sensor* from the left menu. Use the provided controls to make various adjustment to sensor settings.





Select *System Schedule* from the left menu. Select days of the week to apply schedule, and then set *Startup* and *Shutdown* Times.